

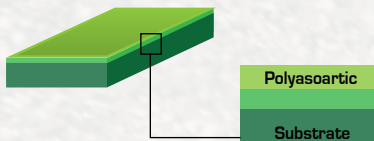
The ONE - DAY - GARAGE

Polyaspartics is a new generation of fast curing coatings. This unique product will accept light foot traffic within only 1 - 2 hours of application. The patented system will allow you to complete an entire floor in hours with a return to service capability of just 1 day. Saving you time and money!
LOW temperature cure: - 30 °C.

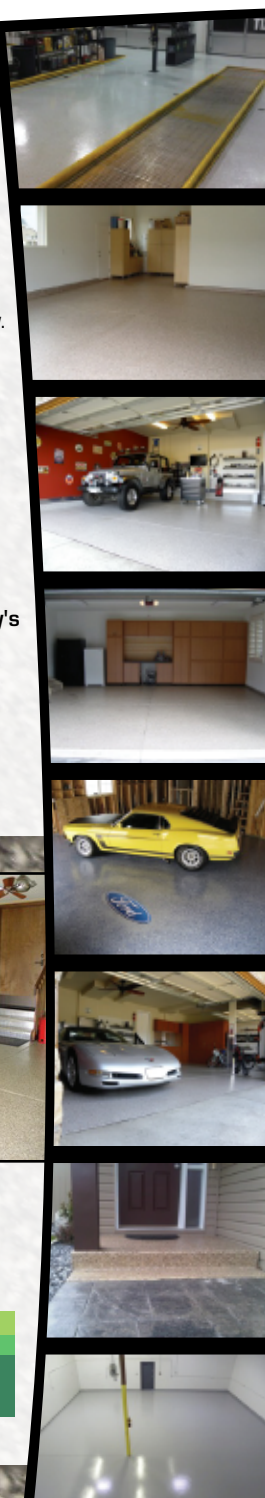
- Resistant to ROAD SALTS amongst most chemicals including skydrol
- Impact resistant
- No HOT tire pick up
- 3-4 x scratch resistance than Epoxy's
- UV Stable with excellent colour and gloss retention
- V.O.C. compliant
- Multiple flake floor systems
- Colored Quartz flooring systems



Our product has the unique ability to absorb right into the substrate.



*Polyaspartics Effectively
Wetting Out The Substrate*



Decorative Concrete



Interior/Exterior:

- Seamless Stamped Overlay: Natural looking stone texture.
- Splatter Texture Overlay: Applied to existing concrete creating a non-slip texture. Ideal for indoor pool decks, water parks, public restrooms or locker rooms where water may be present but a non-slip finish is required.
- MICRO-FINISH™ Seamless Floors: Applied to existing concrete less than 1/16" thick and literally as smooth as glass.
- Modified Slate Trowel Overlay: similar to splatter texture overlay but typically a smoother finish.
- REFLECTOR™ Enhancer Flooring Systems: The hottest trend in commercial, retail and residential flooring systems (Interior)
- Full Depth Stamped Concrete: The concrete is poured, colored and embossed with a pattern all the same day (Exterior)
- Concrete Staining: A multitude of color options available
- Concrete Coloring: A multitude of color options available
- Industrial Flooring: Protective high wear coatings such as epoxies and polyaspartics for manufacturing facilities, medical clinics, industrial warehouses, etc

Patterns can replicate that of brick, stone, slate, tile, etc.



Non Slip Surfaces Safety Floor/Bathtub Treatment



SURE STEP creates an invisible, sophisticated tread design into the surface of hard mineral floors and porcelain/enamel bathtubs. SURE STEP increases a surface's coefficient of friction by 200-400% ... when wet! SURE STEP will not change the appearance of a floor or bathtub, and there is no downtime: you can use the floor or tub immediately following treatment.

A CLEAN PROCESS

SURE STEP is not a film or a coating, it does not leave any chemicals, grit or residue on the surface of the floor or bathtub. Once a surface is treated, 100% of the solution is neutralized and then removed.

FLOOR AND BATHTUB FRIENDLY

A SURE STEP treatment will not cause chipping, peeling or discoloration. In fact, a SURE STEP floor and bathtub will look brand new again.



Polyaspartic Coatings

This two component aliphatic/ polyurea coating is an impermeable & anti-microbial surface that will provide superior performance with tremendous versatility & productivity.

Ideal for:

- Automotive service and sales areas
- Distribution & warehousing facilities
- Restaurant kitchen, dining & patio areas
- Medical, pharmaceutical & laboratory areas
- Health clubs & public facilities



GARAGE

Completed in just ONE day!!!

Before



Mid-way



After



What we offer

- One day garage floor coatings
- Non slip flooring and tub treatment
- Custom indoor/outdoor seamless coatings
- Seamless patio & pool deck coatings
- Decorative concrete overlays
- Driveway sealing
- Crack repairs
- Concrete preparation available
- Serving residential, commercial & industrial

"We're a caring, efficient company with a fine attention to detail and customer satisfaction.

We aim to get the job done right the first time and in using our long lasting products you will save time and money over the years."

Sheldon Ness-Munro - President

At Inline Solutions we offer a free estimate and will supply a computerized visual representation of how your finished project will look!



For more information or for a quote contact us at

info@inlinesolutions.ca

780.720.0982 • 780.946.6145 (Fax)

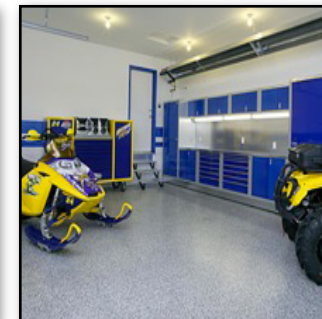
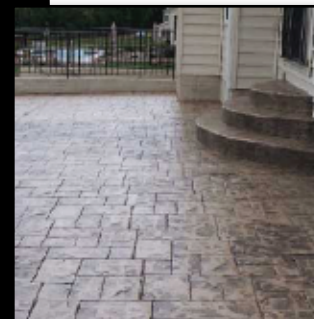
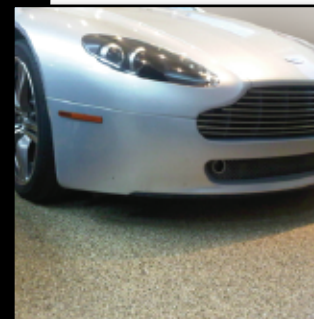
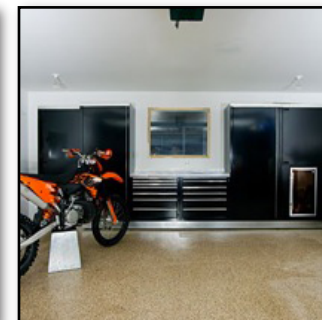
www.inlinesolutions.ca



Box 3548
Spruce Grove AB
T7X 3A8



floor coatings & non-slip treatments



www.inlinesolutions.ca